

IBR APPROVED REFLEX FLAT GLASS GAUGE "RFGB"

Reflex glass gauge is designed for safe & positive visual indication of liquid level in vessel under high pressure & temperature conditions in boiler applications.

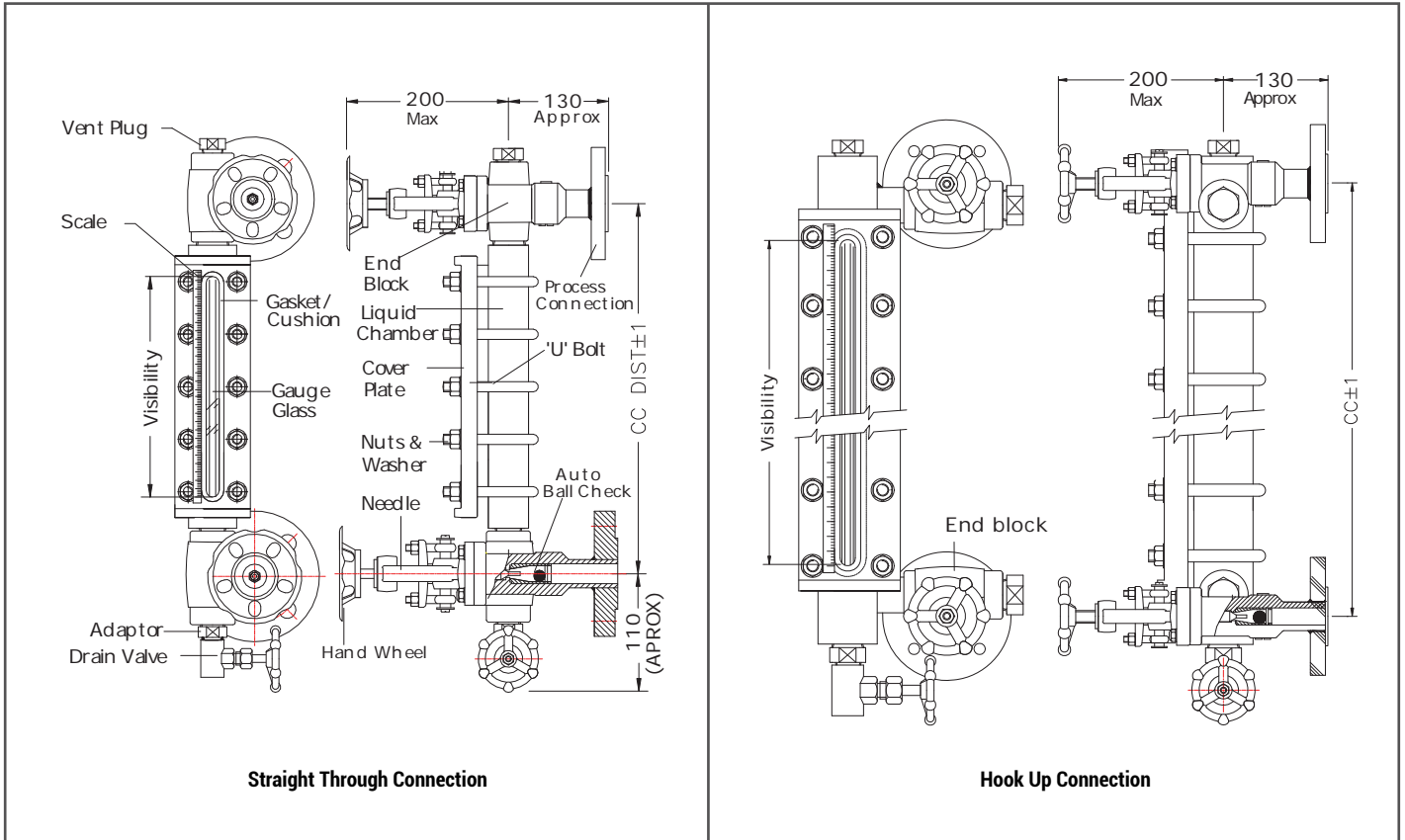


Straight Through Connection



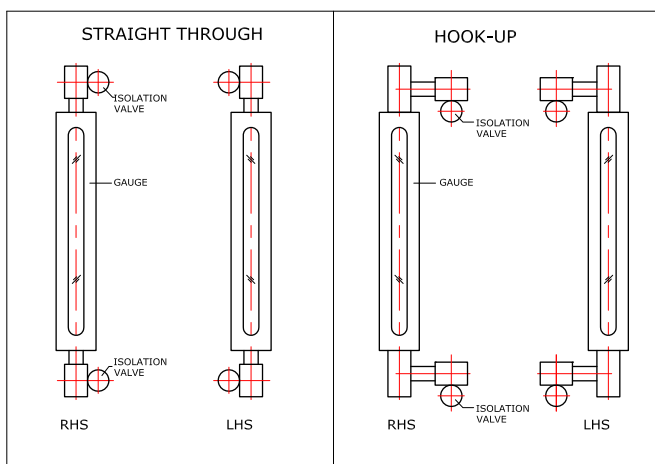
Hook Up Connection

SCHEMATIC DIAGRAM



GAUGE MOUNTING

STANDARD CC DISTANCE X PROCESS CONN.



Straight Through

Hook - up

SL	CC Dist (mm)	Process Connection
1.	320	¾" NB ASME 300 # Flange
2.	400	1" or ¾" NB ASME 300# or Table 'H' Flange
3.	500	1" NB Table 'H' Flange
4.	508	1" NB ASME 300# or Table 'J' Flange

SPECIFICATIONS

Gauge Glass	: Toughened borosilicate (30W) or (34W)
Liquid Chamber	: CS SA516 Gr. 70 or SS316
Cover Plate	: CS A105 or SS316
Process Connection MOC	: CS SA516 Gr. 70 or CS A105 or SS316
Process Connection	: 3/4" or 1"x ASME 150#, 300#, 600# RF or WNRF Flange or 300# Stub end Flange or Table 'H' or 'J' Flange or Socket weld 3000 #
Process Conn. Orientation	: Rear-rear
Isolation Valve	: CS A105 or SS316 x Offset Needle Valve x Bolted Bonnet (OS) with Auto Ball Check (wheel CS fabricated)
Gauge Connection	: 1) 1/2" Straight through x Screwed Nipple or 3/4" Union (top-bottom chamber connection) 2) 1" Hook up x Welded Nipple (side-side chamber connection)
Gauge Mounting	: Left Hand Side (LHS) or Right Hand Side (RHS)
Vent	: 1/2" NPT Plug
Drain	: 1/2" NPT Globe or Gate or Needle Valve
CC Distance	: 320, 400, 500 & 508 mm, others on request
Calibrated Scale	: SS304 (LC = 5 mm)
Max. Optg. Temperature	: 243 °C
Max. Operating Pressure	: upto 32 kg/cm ²
Max. Test Pressure	: upto 64 kg/cm ²
Gasket	: CAF, CNAF or Graphoil SS 304 or 316 Reinforced
U Bolts & Nuts	: A193, Gr. B7, A194 Gr. 2H
Accessories	: Counter Flanges with Nut Bolts & Gaskets

APPLICATIONS

- ▶ Boiler Drums, Boiler Feed Water, Blow Down Tanks and Dearators

MODEL IDENTIFICATION

RFGB -																		
1. Body (Liquid Chamber) MOC																		
CS SA516 Gr.70	B																	
SS316	S																	
Others	O																	
2. Cover Plate MOC																		
CS A105	A																	
SS316	S																	
Others	O																	
3. Gauge Glass																		
Tempered Borosilicate (30W)																		
Others																		
4. Sealing Gasket/ Cushion																		
CAF																		
CNAF																		
Graphoil SS316 reinforced																		
Graphoil SS304 reinforced																		
5. Isolation Valve MOC																		
CS A105																		
SS316																		
6. Vent x Drain																		
½" NPT Plug x ½" NPT Globe Valve																		
½" NPT Plug x ½" NPT Gate Valve																		
½" NPT Plug x ½" NPT Needle Valve																		
Others																		
7. Gauge Connection																		
Straight Through (top-bottom) x Screwed Nipple																		
Hook-up (side-side) x Welded Nipple																		
Others																		
8. Process Connection MOC																		
CS SA516 Gr.70																		
SS316																		
Others																		
9. Process Connection Size																		
¾"																		
1"																		
Others																		
10. Process Connection Type																		
ASME 150 # RF Flange																		A
ASME 300 # RF Flange																		B
ASME 600 # RF Flange																		C
ASME 150 # WNRF Flange																		D
ASME 300 # WNRF Flange																		E
ASME 600 # WNRF Flange																		F
ASME 300 # Stub End Flange																		G

Table 'H' Flange	H				
Table 'J' Flange	J				
Socket Weld 3000#	K				
Others	O				
11. Gauge Mounting					
LHS		L			
RHS		R			
12. Bolts x Nuts					
A 193 Gr. B7 x A 194 Gr. 2H				1	
Others				0	
13. Calibrated Scale MOC					
Not Provided					W
SS304 scale in mm (LC = 5 mm)					N
Others					O
14. Center to Center Distance					
320 mm					1
400 mm					2
500 mm					3
508 mm					4
Others					0
15. Accessories					
Not Provided					W
Counter Flanges (CS) + Nuts, Bolts (CS) + Gaskets (CAF)					1
Others					0

ORDERING INFORMATION

Model No. x Operating Temperature & Pressure

PUNE TECHTROL PRIVATE LIMITED

Regd. & Sales: S-18, MIDC Bhosari, Pune - 411026, India
+91-20-66342900 | ho@punetechtrol.com

Works: J-52/7, MIDC Bhosari, Pune - 411026, India
+91-20-67313600 | www.punetechtrol.com

